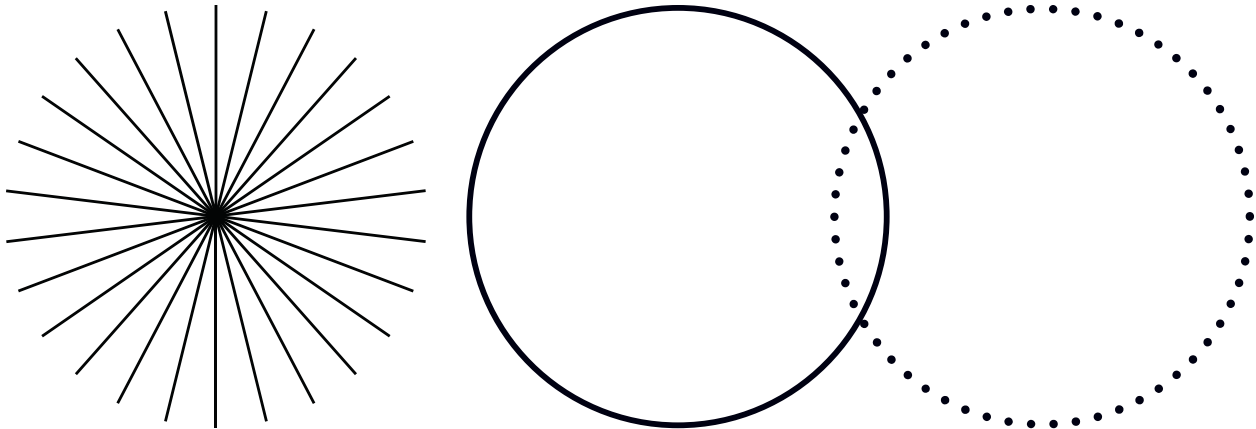


Diamond C-20 and C-30 Air-Cooled OEM Laser

Preinstallation Manual



**Preinstallation Manual
Diamond C-20 and C-30
Air-Cooled OEM Lasers**



1280 Blue Hills Avenue
Bloomfield, CT 06002

This document is copyrighted with All Rights Reserved. Under copyright laws, this document must not be copied in full or in part, or reproduced by any other media, without the express written permission of Coherent Corp. (Coherent). Permitted copies must have the same proprietary and copyright notices as were attached to the original. This exception does not permit copies—whether or not sold—to be made for others; however, all the material purchased can be sold, given, or loaned to another person. Under the law, “copying” includes translation into another language.

Coherent and the Coherent Logo are registered trademarks of Coherent Corp. The Coherent name and logo may not be used or reproduced without prior written permission of Coherent Corp. The Diamond C-20 and C-30 is a trademark of Coherent Corp. All other trademarks or registered trademarks are the property of their respective owners.

Patents referenced in this manual are active when the manual is printed (see last page for the revision date). It is advised to check www.coherent.com/company/patents to see if the patents are still active.

Every effort was made to make sure that the data shown in this document is accurate. The information, figures, tables, specifications, part numbers, and schematics contained in this manual are subject to change without notice. Coherent makes no warranty or representation, either expressed or implied, related to this document. In no event will Coherent be liable for any direct, indirect, special, incidental, or consequential damages caused by any defects in its documentation.

Technical Support

In the U.S.:

Should there be any difficulties with the laser or a need for any technical information, go to the Coherent website www.coherent.com. If further assistance is still needed, contact Coherent Technical Support by email customer.support@coherent.com or telephone, +1-734-456-3100. Be prepared to supply the model and laser head serial number of the laser system. Also include a description of the problem and any attempted corrective steps to the Product Support Engineer responding to the request.

Telephone coverage is available Monday through Friday (except U.S. holidays and company shutdowns). Inquiries received outside of normal office hours will be captured by the Coherent automatic answering system and will be quickly returned the next business day.

Outside the U.S.:

If located outside the U.S., visit www.coherent.com for technical assistance or contact the local Service Representative. Service Representative telephone numbers and addresses can be found on the Coherent website.

Coherent provides telephone and web-based technical assistance as a service to Coherent customers and assumes no liability for any injury or damage that can occur at the same time with such services. Under no conditions do these support services affect the terms of any warranty agreement between Coherent and the Buyer. Operation of any Coherent laser with any of its interlocks defeated is always at the operator's own risk.

Table of Contents

1 Introduction.....	1
1.1 Signal Words and Symbols in This Manual	1
1.1.1 Signal Words	1
1.1.2 Symbols.....	2
1.2 Preface	3
1.3 Export Control Laws Compliance	4
1.4 Notice Concerning Regulatory Status of Diamond Series Lasers	4
1.5 Notice Concerning Warranty.....	4
1.6 The Preinstallation Manual	5
1.6.1 Intended Audience.....	5
1.6.2 Numbering of Sections, Pages, and Instructions	5
1.6.3 Cited Standards.....	6
1.7 Laser Terminology	6
1.8 Units of Measurements.....	7
1.9 Feedback Regarding Documentation	7
1.9.1 Feedback Email Address.....	7
2 Laser Safety.....	9
2.1 Hazards	9
2.1.1 Optical Safety	10
2.1.1.1 Recommended Precautions and Guidelines.....	10
2.1.1.2 Laser Safety Eyewear	11
2.1.2 Viewing Distance	12
2.1.3 Electrical Safety.....	12
2.1.3.1 Recommended Precautions and Guidelines.....	13
2.2 Safety Features and Compliance with Government Requirements.....	14
2.2.1 Laser Classification	15
2.2.2 Protective Housing	15
2.2.3 Protective Covers (Safety Interlocks).....	15
2.3 Compliance to Standards Relevant to CE and UKCA Mark	16
2.4 Environmental Compliance.....	16
2.4.1 Electromagnetic Compatibility	16
2.4.2 RoHS Compliance	17
2.4.3 China-RoHS Compliance	17
2.4.4 REACH Compliance.....	17
2.4.5 Waste Electrical and Electronic Equipment.....	17
2.5 Location of Safety Labels	18
2.6 Sources of Additional Information	20
2.6.1 Laser Safety Standard.....	20
2.6.2 Publications and Guidelines	20
2.6.3 Equipment and Training	21

3 System Description	23
3.1 Introduction	23
3.2 Purpose of This Manual	23
3.3 Configuration	24
3.4 Hardware Overview	24
3.4.1 DC Input Power	24
3.5 Cooling Requirements	24
3.5.1 Comparison of Air & Liquid Cooling (Reference)	25
3.6 Laser Head	25
3.7 RF Power Module	26
3.8 Configuration and Facility Requirements	26
4 Utility Requirements and System Installation	27
4.1 Unpacking and Inspection	27
4.1.1 Verifying Delivery	27
4.1.2 Shipping Container and Packing Materials	27
4.1.3 Protective Shipping Tape	28
4.1.3.1 Tape Removal	28
4.2 Safety Issues in Laser Installation	29
4.3 Mechanical Mounting	29
4.3.1 Mounting Considerations for C-20 and C-30	31
4.4 Ambient Air Cleanliness	31
4.5 Air Cooling	32
4.5.1 Air Flow	32
4.5.2 Signal Interface	32
4.6 Electrical Power Connection	32
4.6.1 DC Power Supply Requirements	34
4.6.1.1 DC Power Supply Cabling Requirements	34
4.7 Control Signal Connection	35
4.8 Beam Propagation	36

List of Illustrations

2-1.	Nominal Ocular Hazard Distance (NOHD)	12
2-2.	Label Placement.....	18
2-3.	Labels	19
3-1.	C-20 and C-30 Air-Cooled Lasers	23
4-1.	Protective Shipping Tape.....	28
4-2.	C-20 and C-30 Air-Cooled Laser Head Dimensions.....	30
4-3.	Electrical Connections to C-20 and C-30	33
4-4.	Beam Diameter vs. Distance from Laser Head	37

List of Tables

3-1.	Comparison: The Benefits of Air Cooling vs. Liquid Cooling Methods	25
3-2.	C-20 and C-30 Air-Cooled Configuration and Facility Requirements	26
4-1.	Signal Interface Description and Connector Pinout.....	35

1 Introduction

1.1 Signal Words and Symbols in This Manual

This documentation may contain sections in which particular hazards are defined or special attention is drawn to particular conditions. These sections are indicated with signal words in accordance with ANSI Z-535.6 and safety symbols (pictorial hazard alerts) in accordance with ANSI Z-535.3 and ISO 7010.

1.1.1 Signal Words

Four signal words are used in this documentation: **DANGER**, **WARNING**, **CAUTION** and **NOTICE**.

The signal words **DANGER**, **WARNING** and **CAUTION** designate the degree or level of hazard when there is the risk of injury:

DANGER!

Indicates a hazardous situation that, if not avoided, will result in death or serious injury. This signal word is to be limited to the most extreme situations.

WARNING!

Indicates a hazardous situation that, if not avoided, could result in death or serious injury.

CAUTION!

Indicates a hazardous situation that, if not avoided, could result in minor or moderate injury.

The signal word “**NOTICE**” is used when there is the risk of property damage:

NOTICE

Indicates information considered important, but not hazard- related.

Messages relating to hazards that could result in both personal injury and property damage are considered safety messages and not property damage messages.

1.1.2

Symbols

The signal words **DANGER**, **WARNING**, and **CAUTION** are always emphasized with a safety symbol that indicates a special hazard, regardless of the hazard level:



This symbol is intended to alert the operator to the presence of additional information.



This symbol is intended to alert the operator to the presence of important operating and maintenance instructions.



This symbol is intended to alert the operator to the danger of exposure to hazardous visible and invisible laser radiation.



This symbol is intended to alert the operator to the presence of dangerous voltages within the product enclosure that may be of sufficient magnitude to constitute a risk of electric shock.



This symbol is intended to alert the operator to the danger of Electro-Static Discharge (ESD) susceptibility.



This symbol is intended to alert the operator to the danger of crushing injury.



This symbol is intended to alert the operator to the danger of a lifting hazard.

1.2

Preface

This is the preinstallation manual for the Diamond C-20 and C-30 OEM/Industrial laser manufactured by Coherent. These lasers are OEM systems; they are designed as components which are to be inserted by the original equipment manufacturer (OEM) prior to delivery to the end user. Coherent requires that the user read "Laser Safety" (p. 9), before operating the laser.



NOTICE

Read this manual carefully before operating the laser for the first time. Failure to follow the instructions and safety precautions in this manual can result in serious injury or death. Special attention must be given to the material in "Laser Safety" (p. 9), that describes the safety features built into the laser. Keep this manual with the product and in a safe location for future reference.



DANGER!

Use of controls or adjustments or performance of procedures other than those specified herein may result in hazardous radiation exposure.

1.3 Export Control Laws Compliance

It is the policy of Coherent to comply strictly with U.S. export control laws.

Export and re-export of lasers manufactured by Coherent are subject to U.S. Export Administration Regulations, which are administered by the Commerce Department. In addition, shipments of certain components are regulated by the State Department under the International Traffic in Arms Regulations.

The applicable restrictions vary depending on the specific product involved and its destination. In some cases, U.S. law requires that U.S. Government approval be obtained prior to resale, export or re-export of certain articles. When there is uncertainty about the obligations imposed by U.S. law, clarification must be obtained from Coherent or an appropriate U.S. Government agency.

Products manufactured in the European Union, Singapore, Malaysia, Thailand: These commodities, technology, or software are subject to local export regulations and local laws. Diversion contrary to local law is prohibited. The use, sale, re-export, or re-transfer directly or indirectly in any prohibited activities are strictly prohibited.

1.4 Notice Concerning Regulatory Status of Diamond Series Lasers

This laser component does not include all safety features that are required by the United States Food and Drug Administration (FDA), Center for Devices and Radiological Health (CDRH) in laser systems sold to end users. It is sold solely to qualified manufacturers who in their end product, supply interlocks, indicators, and other required safety features, in full compliance with 21 CFR 1040, Subchapter J and/or other applicable national and local regulations.

1.5 Notice Concerning Warranty

Operation or handling of this laser component, inconsistent with this manual, may void the warranty.

1.6 The Preinstallation Manual

This preinstallation manual is designed to familiarize the user with the C-20 and C-30 laser system and its designated use. It contains important information on how to install the laser system safely, properly, and most efficiently. Observing these instructions helps to avoid danger, reduce repair costs, and downtimes and increase the reliability and lifetime of the laser system.

This manual describes the physical hazards related to the laser system, the means of protection against these hazards, and the safety features incorporated in the design of the laser system.

1.6.1 Intended Audience

The preinstallation manual is intended for all persons that are to work on or with the laser system.

1.6.2 Numbering of Sections, Pages, and Instructions

The sections are numbered continuously. The name of the section appears in the upper outside corner of every odd page. Each section ends with an even page number. Consequently, certain even pages at the ends of sections will be intentionally left blank.

The pages of this manual are numbered continuously by section. The page number appears in the bottom center of every page.

Each step within a procedure is sequentially numbered. Each procedure starts with the step number one.

1.6.3 Cited Standards

Unless otherwise stated, all technical standards cited in this manual relate to the latest version of the standard that is applicable at the date of the publication of this manual.

This information is in compliance with the Performance Standards for Laser Products,' *United States Code of Federal Regulations*, 21 CFR 1040.10(d). In many cases, the international standards (ISO and IEC standards) have been adopted wholly or in part by national or regional standards authorities and are known locally under the designation assigned by this authority. For instance, the IEC 60825-1 has been adopted by the European Committee for Standardization as the standard EN 60825-1 and, in turn, by various national standards authorities as standards such as DIN EN 60825 (Germany) and BS EN 60825 (United Kingdom). The exact content, number and revision date of the national standard may, however, vary from that of the corresponding international standard. For further information, contact the publisher of the respective national standard.

1.7 Laser Terminology

ISO 11145 ("Optics and Optical Instruments - Lasers and Laser Related Equipment - Vocabulary and Symbols") contains a list of laser terminology.

To prevent misunderstandings, the C-20 and C-30 documentation strictly differentiates between "laser" and "laser system". Thus "start laser system" means that the power is off and shall be turned on. To "start the laser" means to switch on the laser beam and start laser operation.

Laser	Consists of an amplifying medium capable of emitting coherent radiation by means of stimulated emission.
Laser System	A laser, where the radiation is generated, together with essential additional facilities that are necessary to operate the laser (e.g. cooling, power, and gas supply).

In addition to the terminology used by ISO 11145, IEC 60825-1 uses the term "laser product". This term relates to any product or assembly of components which constitutes or is intended to incorporate a laser. In other words, the term "laser product" can be used in conjunction with any of the definitions contained in ISO 11145.

1.8 Units of Measurements

In this manual, units of measurement are used according to the metric system (international system of units (SI)), e.g. meter, millimeter, square meter, cubic meter, liter, kilogram, bar, pascal; and imperial system, e.g. tons, pounds, and ounces; gallons and quarts; miles, yards, feet, and inch.

Temperatures are primarily indicated in degrees Celsius (°C) and Fahrenheit (°F).

The water hardness is indicated in parts per million (ppm; American Hardness).

1.9 Feedback Regarding Documentation

If there are any comments regarding the documentation provided, contact the Coherent Documentation Department.

In any correspondence, provide the following:

- the document part number, revision, and date of issue,
- the section number, page number and, where applicable, the procedure step number,
- a description of any errors,
- a proposal for improvements.

1.9.1 Feedback Email Address

Email documentation.support@coherent.com

2 Laser Safety



This user information is in compliance with the following standards for Light-Emitting Products IEC 60825-1 / EN 60825-1 “*Safety of laser products - Part 1: Equipment classification and requirements*” and CDRH 21 CFR Title 21 Chapter 1, Subchapter J, Part 1040 “*Performance standards for light-emitting products*”.



WARNING!

LASER RADIATION - AVOID EYE OR SKIN EXPOSURE TO DIRECT OR SCATTERED RADIATION CLASS 4 LASER PRODUCT!



WARNING!

Use of controls or adjustments or performance of procedures other than those specified herein may result in hazardous radiation exposure.

This laser safety section must be reviewed thoroughly prior to operating the C-20 and C-30 laser system. Safety instructions presented throughout this manual must be followed carefully.

2.1 Hazards

Hazards associated with lasers generally fall into the following categories:

- Biological hazards from exposure to laser radiation that may damage the eyes or skin
- Electrical hazards generated in the laser power supply or associated circuits
- Chemical hazards resulting from contact of the laser beam with volatile or flammable substances, or released as a result of laser material processing

The above list is not intended to be exhaustive. Anyone operating the laser must consider the interaction of the laser system with its specific working environment to identify potential hazards.

2.1.1 Optical Safety

Laser light, because of its optical qualities, poses safety hazards not associated with light from conventional light sources. The safe use of lasers requires all operators, and everyone near the laser system, to be aware of the dangers involved. Users must be familiar with the instrument and the properties of coherent, intense beams of light.

The safety precautions listed below are to be read and observed by anyone working with or near the laser. At all times, ensure that all personnel who operate, maintain or service the laser are protected from accidental or unnecessary exposure to laser radiation exceeding the accessible emission limits defined in the laser safety standards.



WARNING!

Direct eye contact with the output beam from the laser may cause serious eye injury and possible blindness.

The greatest concern when using a laser is eye safety. In addition to the main beam, there are often many smaller beams present at various angles near the laser system. These beams are formed by specular reflections of the main beam at polished surfaces such as lenses or beamsplitters. While weaker than the main beam, such beams may still be sufficiently intense to cause eye damage.

Laser beams are powerful enough to burn skin, clothing, or combustible materials, even at some distance. They can ignite volatile substances such as alcohol, gasoline, ether, and other solvents, and can damage light-sensitive elements in video cameras, photomultipliers, and photodiodes. The user is advised to follow the control measures below.

2.1.1.1 Recommended Precautions and Guidelines

1. Observe all safety precautions in the preinstallation and operator's manuals.
2. Always wear appropriate eyewear for protection against the specific wavelengths and laser energy being generated. See "Laser Safety Eyewear" (p. 11) for additional information.
3. Avoid wearing watches, jewelry, or other objects that may reflect or scatter the laser beam.
4. Stay aware of the laser beam path, particularly when external optics are used to steer the beam.
5. Provide enclosures for beam paths whenever possible.

6. Block the beam before applying tools such as Allen wrenches or ball drivers to external optics.
7. Limit access to the laser to trained and qualified users who are familiar with laser safety practices. When not in use, lasers should be shut down completely and made off-limits to unauthorized personnel.
8. Terminate the laser beam with a light-absorbing material. Laser light can remain collimated over long distances and therefore presents a potential hazard if not confined. It is good practice to operate the laser in an enclosed room.
9. Post laser warning signs in the area of the laser beam to alert those present.
10. Exercise extreme caution when using solvents in the area of the laser.
11. Never look directly into the laser light source or at scattered laser light from any reflective surface, even when wearing laser safety eyewear. Never sight down the beam.
12. Set up the laser so that the beam height is either well below or well above eye level.
13. Avoid direct exposure to the laser light. Laser beams can easily cause flesh burns or ignite clothing.
14. Advise all those working with or near the laser of these precautions.

2.1.1.2

Laser Safety Eyewear

Always wear appropriate laser safety eyewear for protection against the specific wavelengths and laser energy being generated. The appropriate eye protection can be calculated as defined in the “EN 207 Personal eye protection equipment - Filters and eye-protectors against laser radiation (laser eye-protectors)”, in other national or international standards (e.g. ANSI, ACGIH, or OSHA) or as defined in national safety requirements. Anyone working with or near the C-20 and C-30 laser must wear laser safety eyewear with an OD rating 5 eye protection.



CAUTION!

Laser safety eyewear protects the user from accidental exposure to laser radiation by blocking light at the laser wavelengths. However, laser safety eyewear may also prevent the operator from seeing the beam or the beam spot. Exercise extreme caution even while wearing safety glasses.

2.1.2 Viewing Distance

C-20 and C-30 lasers produce optical power levels that are dangerous to the eyes and skin if exposed directly or indirectly. These products must be operated only with proper eye and skin protection at all times. Never view directly emitted or scattered radiation with unprotected eyes. When viewing the laser during operation, the operator must maintain the Nominal Ocular Hazard Distance (NOHD) between the laser or scattered radiation and the operator's eyes. Figure 2-1 summarizes the NOHD for the power range of the C-20 and C-30 for direct viewing of the collimated beam along with two other common configurations. The NOHD in Figure 2-1 is based on the Maximum Permissible Exposure (MPE = 0.1 W/cm^2) level for each power condition as specified in ANSI Z136.1 and IEC 60825-1.

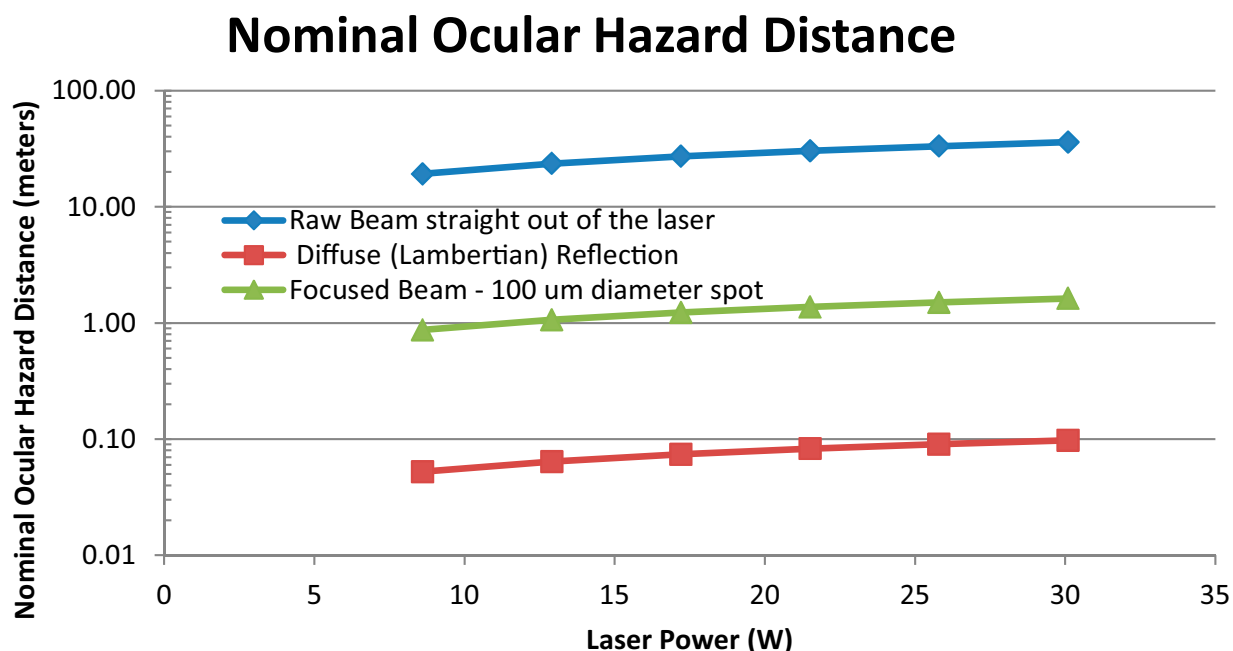


Figure 2-1. Nominal Ocular Hazard Distance (NOHD) for indicated conditions calculated per ANSI Z136.1

2.1.3 Electrical Safety

All C-20 and C-30 laser systems, which consist of the laser head and the RF power module, require high current at + 48 VDC to operate. This voltage is sourced from commercially available power supplies from various manufacturers. The typical input voltage to these power supplies is 208 or 480 VAC. These voltages can be lethal. Every portion of the electrical system should be treated as if it is at a dangerous voltage level.

High RF power levels are present in the RF power module compartment and laser resonator compartment when the power is on. There is no RF radiation exposure hazard to personnel so long as all protective covers are not removed.



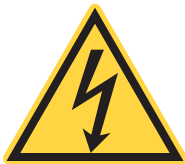
DANGER!

Normal operation of the C-20 and C-30 should not require access to the power supply circuitry. Removing the power supply cover will expose the user to potentially lethal electrical hazards. Contact an authorized service representative before attempting to correct any problem with the power supply.

2.1.3.1

Recommended Precautions and Guidelines

The following precautions must be observed by everyone when working with potentially hazardous electrical circuitry:



DANGER!

When working with electrical power systems, the rules for electrical safety must be strictly followed. Failure to do so could result in the exposure to lethal levels of electricity.

1. Disconnect main power lines before working on any electrical equipment when it is not necessary for the equipment to be operating.
2. Do not short or ground the power supply output. Protection against possible hazards requires proper connection of the ground terminal on the power cable, and an adequate external ground. Check these connections at the time of installation, and periodically thereafter.
3. Never work on electrical equipment unless there is another person nearby who is familiar with the operation and hazards of the equipment, and who is competent to administer first aid.
4. When possible, keep one hand away from the equipment to reduce the danger of current flowing through the body if a live circuit is touched accidentally.
5. Always use approved, insulated tools.

2.2 Safety Features and Compliance with Government Requirements

The following features are incorporated into the instrument to conform to several government requirements:

United States of America:

The applicable United States Government requirements are contained in 21 CFR, Subchapter J, Part 1040 administered by the Center for Devices and Radiological Health (CDRH).

Integrators who incorporate a C-20 and C-30 laser into other products that they introduce into United States commerce are defined in the law as manufacturers who are thus required to manufacture their products to conform to the Federal standard, certify them, and submit product reports to the CDRH.

For jurisdictions outside of the United States, it is the responsibility of the buyer of this laser device to ensure that it meets the local laser safety requirements.

Europe:

The European Community requirements for product safety are specified in the Low Voltage Directive (LVD) (published in 2014/35/EU). The Low Voltage Directive requires that lasers comply with the standard EN 61010-1/IEC 61010-1 "Safety Requirements For Electrical Equipment For Measurement, Control and Laboratory Use" and EN 60825-1/IEC 60825-1 "Safety of Laser Products". Compliance of this laser with the European requirements is certified by the CE mark.

United Kingdom (England, Wales, and Scotland):

The United Kingdom requirements for product safety are specified in the Electrical Equipment (Safety) Regulations 2016 (published in SI 2016/1101). The Electrical Equipment (Safety) regulations requires that lasers comply with the standard EN 61010-1/IEC 61010-1 "Safety Requirements for Electrical Equipment for Measurement, Control, and Laboratory Use" and EN 60825-1/IEC 60825-1 "Safety of Laser Products". Compliance of this laser with the United Kingdom requirements is certified by the UKCA mark.

2.2.1 Laser Classification

Governmental standards and requirements specify that the laser must be classified according to the output power or energy and the laser wavelength. The C-20 and C-30 is classified as Class 4 based on 21 CFR, Subchapter J, Part 1040, section 1040.10 (c) and/or IEC/EN 60825-1;2007, Clause 8 and IEC/EN 60825-1:2014, Clause 4. In this manual, the classification will be referred to as Class 4.

2.2.2 Protective Housing

The laser head is enclosed in a protective housing that prevents human access to radiation in excess of the limits of Class radiation as specified in the 21CFR, Part 1040 Section 1040.10 (f)(1) and EN 60825-1/IEC 60825-1 Clause 6.2 except for the output beam, which is Class 4.

2.2.3 Protective Covers (Safety Interlocks)

The laser's protective covers are not interlocked and should only be removed by trained service technicians.



WARNING!

Use of controls or adjustments, or performance of procedures other than those specified herein, may result in hazardous radiation exposure.



DANGER!

To avoid potentially fatal electrical shock hazards from electrical equipment, follow all applicable electrical codes such as (in the U.S.) the National Electrical Code.

2.3 Compliance to Standards Relevant to CE and UKCA Mark

The C-20 and C-30 of lasers are OEM products, and are sold as components for integration into complete laser systems by a system integrator. These products are tested and marked as independent products in the European Community (CE) and the United Kingdom (UKCA). For specific details regarding what applicable compliance directives and standards the products have been tested to, refer to the EU Declaration of Conformity and/or the UKCA Declaration of Conformity which are available upon request from Coherent, per contact information on p. ii of this manual.

Compliance to applicable standards for a particular laser tool incorporating C-20 and C-30 lasers must be demonstrated by the manufacturer of the complete system. The primary issue for the system integrator is to design covers, shielding, grounding, routing of electrical cable assemblies, and control elements with the proper safety features so that during subsequent testing the system meets the appropriate standards.

2.4 Environmental Compliance

This section describes compliance with various environmental regulator directives to identify hazardous substances.

2.4.1 Electromagnetic Compatibility

Compliance of this laser with the Electromagnetic Compatibility (EMC) requirements is certified by the CE mark and the UKCA mark. For more information about the CE/UKCA marks see “Compliance to Standards Relevant to CE and UKCA Mark” (p. 16).

Each application and installation is unique, and in some cases, the user may experience Electromagnetic Interference (EMI) noise being emitted from various electronic components. This laser uses high-frequency RF (100 MHz). While adequate countermeasures have been taken to suppress this emission to meet the requirements stated on the Declaration of Conformity, the user may wish to employ additional measures to suppress the EMI to reduce the emissions further. Standard methods of reducing the EMI are:

1. Use of shielded control cables grounded on both ends
2. Addition of appropriate ferrite beads to cables connected to the beam source.

2.4.2 RoHS Compliance

Coherent product(s) conform to all applicable requirements of the EU-RoHS Directive (2011/65/EU) and subsequent Amendment Directives including Directive (EU) 2015/863. Compliance Declarations are available upon request.

2.4.3 China-RoHS Compliance

Coherent product(s) conform to all applicable requirements of Restriction of Hazardous Substances Regulation SJ/T 11364-2014 commonly referred to as China-RoHS.

The China RoHS Hazardous Substance Marking Table is located in the shipping document packet shipped with the product (or laser system).

2.4.4 REACH Compliance

Coherent product(s) conform to all applicable requirements of the EU-REACH Regulation, (1907/2006). Compliance Declarations are available upon request.

2.4.5 Waste Electrical and Electronic Equipment

Coherent product(s) conform to all applicable requirements of the EU Waste Electrical and Electronic Equipment (WEEE)- Directive (2012/19/EU). WEEE management also covers EU Directive 2006/66/EC-EU Battery Directive and Directive 94/62/EC on Packaging and Packaging Waste. Do not dispose of these products or packaging as unsorted municipal waste.

Coherent joins approved compliance organizations to meet its collection and recycling obligations. For further information, please contact:

Email: info@rene-europe.com

Phone: +49 89 490 491 00

Website: www.rene-europe.com

2.5 Location of Safety Labels

Refer to Figure 2-2, “Label Placement,” (p. 18) and Figure 2-3, “Labels,” (p. 19) for a description and location of all required safety labels. These include warning labels indicating removable or displaceable protective housings, apertures through which laser radiation is emitted, and labels of certification and identification [21 CFR § 1040.10(g), 21 CFR § 1010.2, and 21 CFR § 1010.3/ EN 60825-1/IEC 60825-1, Clause 7]

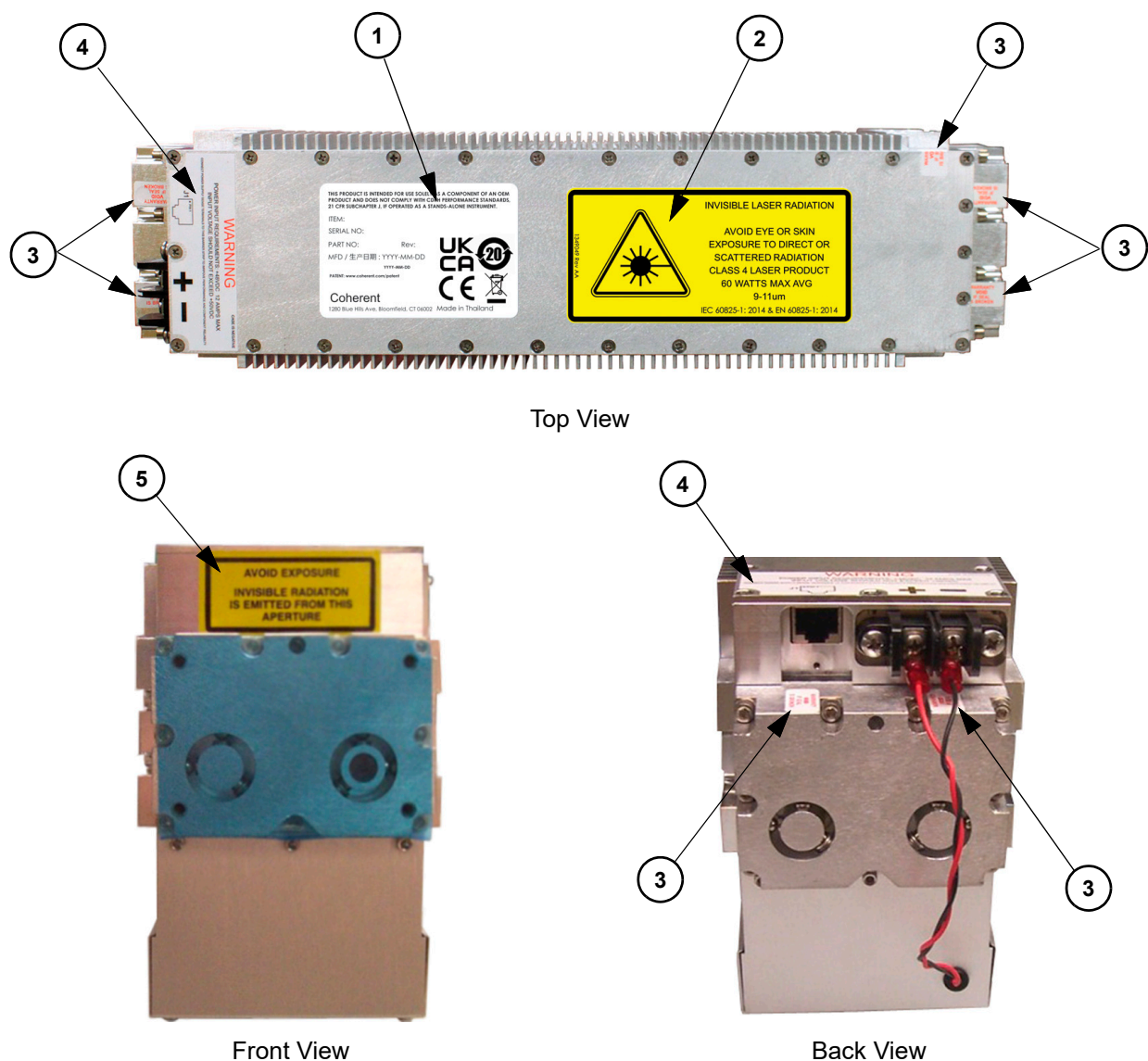
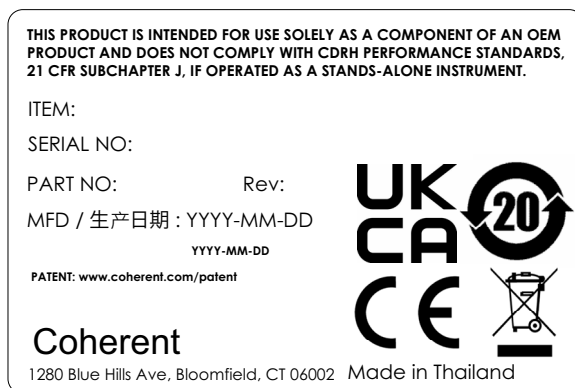
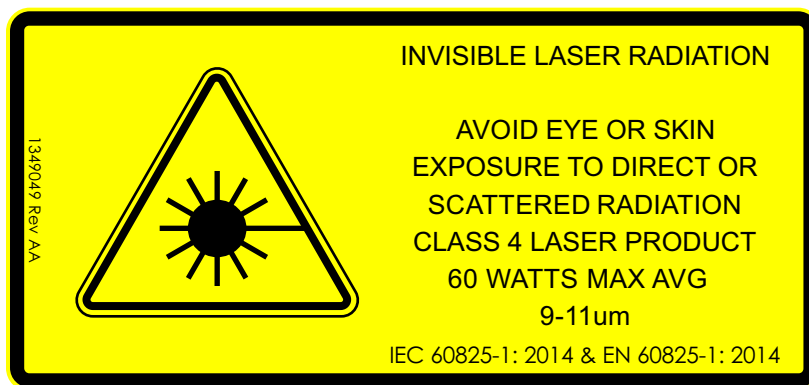


Figure 2-2. Label Placement



1. Identification Label



2. Danger of Laser Radiation Label



3. Tamper Proof Label



4. Voltage Warning Label

Figure 2-3. Labels



5. Warning Aperture Label

Figure 2-3. Labels

2.6 Sources of Additional Information

The following are sources for additional information on laser safety standards and safety equipment and training.

2.6.1 Laser Safety Standard

American National Standard for Safe Use of Lasers
ANSI Z136 Series

American National Standards Institute (ANSI)
www.ansi.org

Performance standards for light-emitting products
21 CFR Title 21 Chapter 1, Subchapter J, Part 1040
U.S. Food and Drug Administration
www.fda.gov

2.6.2 Publications and Guidelines

Safety of laser products - Part 1: Equipment classification and requirements
IEC 60825-1

Safety of laser products - Part 14: A user's guide
IEC 60825-1

Safety Requirements For Electrical Equipment For Measurement, Control and Laboratory Use
IEC 61010-1 / EN 61010-1

International Electrotechnical Commission (IEC)
www.iec.ch

Safety of laser products - Part 1: Equipment classification and requirements

BS EN 60825-1

British Standard Institute

www.bsigroup.com

A Guide for Control of Laser Hazards

American Conference of Governmental
and Industrial Hygienists (ACGIH)

www.acgih.org

Laser Safety Guide

Laser Institute of America

www.lia.org

2.6.3

Equipment and Training

Coherent Web Site

Laser Safety Page, Laser Safety Awareness Training Video

www.coherent.com

3 System Description

3.1 Introduction

In this section, specifications and characteristics of the C-20 and C-30 lasers will be discussed. Characteristics to be discussed include mechanical, thermal, electrical, and optical interfaces; and environmental requirements and limitations.

C-20 and C-30 lasers are sealed-off, RF-excited CO₂ lasers capable of continuous wave (CW) or modulated operation. From the laser safety point of view, these lasers are considered to be components and must be integrated into a system by a qualified original equipment manufacturer (OEM) prior to delivery to the end user. See “Laser Safety” (p. 9) for a complete discussion of laser safety issues.

3.2 Purpose of This Manual

This manual is designed to assist the original equipment manufacturer (OEM) during the integration of the C-20 and C-30 OEM lasers. It contains information on installation.

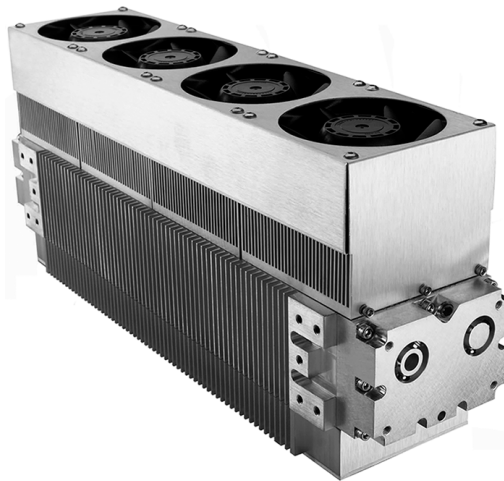


Figure 3-1. C-20 and C-30 Air-Cooled Lasers

3.3 Configuration

Figure 3-1 illustrates the baseline configurations (i.e., without any optional hardware additions or deletions) of the C-20 and C-30 lasers. Each laser system consists of a laser head assembly and an integrated radio frequency (RF) power module. The RF power module converts 48 VDC, ≤ 12 A (35 A peak for 1 ms) power to radio frequency power.

Connection of the customer-supplied DC power supply to the C-20 and C-30 is via a barrier strip with screw terminals on the RF power module. These terminals should also be used for the connection of wires for remote voltage sensing. Such sensing is recommended to control the voltage at the input to the RF power module more precisely.

3.4 Hardware Overview

The C-20 and C-30 lasers are waveguide, carbon dioxide (CO₂) lasers. RF electric fields provided by the RF power module excite the CO₂ gas mixture. The standard configurations of this laser operate at wavelengths between 9 μ m and 11 μ m in the infrared region of the electromagnetic spectrum.

3.4.1 DC Input Power

DC input power is provided by the user through customer-supplied bus wiring, which goes to the RF power module. The RF power module converts this DC electrical power into RF power, which is used to excite the gas in the laser head. The DC power supply requirements are discussed in detail in “DC Power Supply Requirements” (p. 34).

3.5 Cooling Requirements

Total heat dissipation for the laser is specified in Table 3-2. The laser head typically dissipates 325 W from its base surface while the RF power module typically dissipates 175 W for a total typical heat dissipation of 500 W (maximum total heat dissipation is < 575 W). The C-20 and C-30 must be provided adequate cooling to keep the laser’s operating temperature within acceptable limits. The cooling method that is used must not induce stresses that will result in misalignment of the laser resonator. The C-20 and C-30 heat sinks are designed so that the assembled structure remains free of excessive stress. Installation requirements related to cooling of the air-cooled version of the C-20 and C-30 lasers are discussed in detail in “Air Cooling” (p. 32).

3.5.1 Comparison of Air & Liquid Cooling (Reference)

Air cooling and liquid cooling each have distinct advantages. Table 3-1 describes the factors to be taken into consideration when choosing a cooling system for a laser module.

Consideration should also be taken if condensable vapors are present and to take suitable measures to purge sensitive areas, such as optical surfaces, with a suitable gas.

Table 3-1. Comparison: The Benefits of Air Cooling vs. Liquid Cooling Methods

Air Cooling	Liquid Cooling
<ul style="list-style-type: none"> • Low in cost • Low in complexity • Low service requirements • Easier to install 	<ul style="list-style-type: none"> • Offers the highest process stability • Can yield the most compact arrangement • Suitable for applications in which the ambient air temperature exceeds 40°C • Better for applications in which the ambient air is laden with particulates • Easier to make a hermetically sealed system



NOTICE!

To avoid damage to the laser, never operate the laser without adequate air cooling.

3.6 Laser Head

The laser head takes RF input power and converts some of it to laser radiation. The rest of the RF input power is exhausted as heat. For the C-20 and C-30 Air-Cooled lasers, the heat is exhausted into the ambient air. The laser head consists of the folded optical waveguide resonator, the all-metal gas envelope structure, and RF power module. Infrared laser radiation is emitted from the optical aperture. Pictures and dimensional drawings for the C-20 and C-30 Air-Cooled lasers are shown in Figure 3-1 on page 23 and Figure 4-2 on page 30.

3.7 RF Power Module

The C-20 and C-30 RF power module converts DC input power to RF energy, which is sent to the laser head. Heat from the RF power module is exhausted into the surrounding air. An RJ-45-type connector is used to control the laser system. All of the user interfaces (DC power and signal interface) are on one panel of the RF power module.

3.8 Configuration and Facility Requirements

Table 3-2 describes the configuration and facility requirements for C-20 and C-30 lasers. Laser performance specifications are provided in the C-20 and C-30 Air-Cooled lasers datasheet available online at www.coherent.com and in the test report provided with each laser.

Table 3-2. C-20 and C-30 Air-Cooled Configuration and Facility Requirements

PARAMETER	VALUE
Weight	6.6 kg (14.5 lbs.)
Dimensions (LxWxH)	357 x 92.5 x 154.5 mm (14.1 x 3.64 x 6.08 in.)
Input Power ¹	48 VDC \pm 2% regulation, < \pm 1% P-P Noise/Ripple 11.5 A, and 18 A peak for 1 ms minimum, measured at input terminals
Cooling	Air
Heat Dissipation (W)	< 575 W
Maximum Case Temperature	< 60°C (140°F)
Operating Environment	
Temperature	5 to 40°C (41 to 104°F)
Altitude	< 2,000 m (6,500 ft.)
Humidity	Non-condensing
Shipping/Storage Environment	- 10 to 60°C (14 to 140°F), non-condensing
¹ The overall height dimension is taller for the Dual Chillplate version of this item.	

4 Utility Requirements and System Installation



NOTICE

Before installation, it is essential that the customer read this manual thoroughly. It is important that the user become familiar with all aspects of the installation and operation of the C-20 and C-30 laser system, including and specifically the information contained in "Laser Safety" (p. 9).

4.1 Unpacking and Inspection

Before unpacking the laser components, inspect the shipping carton for evidence of rough handling, and note any damage. If damage to the shipping carton is evident, request the carrier's agent be present when the unit is unpacked. Inform the shipping carrier and Coherent of any evidence of damage in shipment. The buyer and shipping carrier is responsible for any damage which occurs during shipment.

4.1.1 Verifying Delivery

The shipping container contains the following:

- Laser head and integral RF power module
- Final test sheet

If any of these items are missing, report this to Coherent immediately.

4.1.2 Shipping Container and Packing Materials

Coherent recommends that the shipping box and packing materials be saved. These will be required if the laser system is to be shipped to another location after initial installation, or returned for service or replacement.

If the original shipping carton is unavailable, contact Coherent Product Support to purchase a new one.

4.1.3 Protective Shipping Tape

The front of the C-20 and C-30 laser head is protected by a blue adhesive film or tape (see Figure 4-1). This tape is designed to protect the optics during shipping and must be removed prior to operating the laser.



NOTICE!

To avoid damage, the blue protective tape must be removed **BEFORE** operating the laser.



Figure 4-1. Protective Shipping Tape

4.1.3.1 Tape Removal

To remove the protective tape:

1. Pinch one corner of the tape between the thumb and index fingers.
2. Gently pull the tape off of the laser.
3. Discard the tape and do not place the tape anywhere near or on the laser.

4.2 Safety Issues in Laser Installation

Installation of the C-20 and C-30 lasers must comply with all applicable electrical safety and laser safety laws and regulations. Review “Laser Safety” (p. 9) for important information relating to safety.

The negative (return) side of the DC input connection to the C-20 and C-30 RF power module is connected internally to the chassis. The user must assure that the system into which the C-20 and C-30 is built protects against the possibility that the laser head or RF power module chassis could be at a hazardous voltage and that personnel could be exposed to these voltages.



DANGER!

To avoid potentially fatal electrical shock hazards from electrical equipment, follow all applicable electrical codes such as (in the U.S.) the National Electrical Code.

The laser must be secured properly to avoid the possibility of the laser shifting unexpectedly during operation, creating a hazardous condition. The location of the output beam of the C-20 and C-30 laser head is shown in Figure 4-2. The laser output is emitted from the aperture shown in the referenced figure and propagates within a full cone angle up to 5°. The acceptance angle of the system aperture must intercept all of the output of the laser.

It is also extremely important to understand the direction, divergence, and magnitude of all reflections that will occur from optical surfaces. Infrared (IR) beams, such as those from the C-20 and C-30 lasers, can also be located with commercially available IR screens, such as those produced by Macken Instruments, Inc. [tel. (707) 566-2110]. Coherent recommends that all beam propagation paths be enclosed and that personnel operating the laser be qualified optical technicians who are familiar with this type of hardware.

4.3 Mechanical Mounting

The dimensions for the C-20 and C-30 laser heads are shown in Figure 4-2 (p. 30). Mechanical mounting of the C-20 and C-30 laser head must result in no distortion or stress the laser head in any way. Otherwise, optical alignment and power stability could be adversely affected.

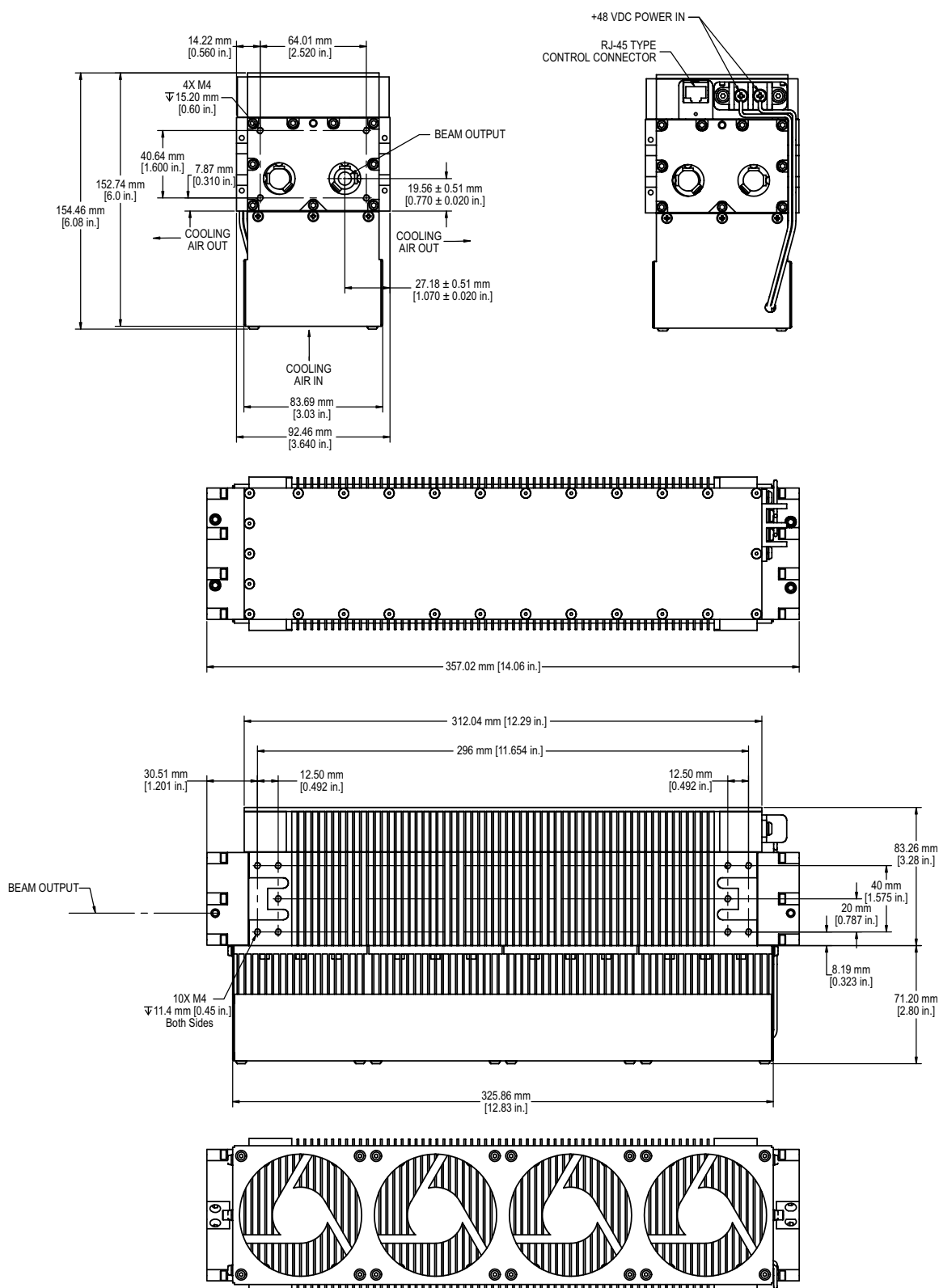


Figure 4-2. C-20 and C-30 Air-Cooled Laser Head Dimensions

4.3.1 Mounting Considerations for C-20 and C-30

Certain aspects of specific customer applications may preclude absolute interchangeability of laser heads. For example, for certain applications, the sensitivity of the application to optical beam pointing errors may require external optical realignment after the laser head is replaced in the customer's integrated system. Depending on the method of mounting and the sensitivity of the integrated customer system to beam pointing errors, even removing a laser head from the customer's system, then replacing the same laser head back into the customer's system may require external optical realignment. This external alignment would be a repositioning of the head itself or adjustment of beam delivery mirrors (positions and angle). Consult Coherent if there is any question about such interchangeability issues.

Coherent recommends use of the optional brackets (part number 1101-12-0016 for a set of 4) that are designed for mounting the laser safely without inducing any stress onto the laser. Care must be taken not to induce stress onto the laser head, as optical mis-alignment of the laser resonator can occur, which would require the laser to be returned to Coherent for service. A mechanical drawing for this bracket is provided in the Appendix A. Coherent strongly encourages use of this bracket or a similar design in order to accommodate temperature changes in operation while providing secure mounting.

4.4 Ambient Air Cleanliness

The C-20 and C-30 laser heads are designed for use in a dust-free or nearly dust-free environment. They should be installed in a protective housing that prevents dust or debris from contaminating the optical output window. Do not turn the laser on if there is water, dust, or dirt on the output element; otherwise, damage to the coating on this optical element may occur. To prevent such optical damage, never allow the output window to become contaminated.

Do not allow the fins on the heat-sinking elements to become clogged with dirt, dust, or debris. They must be cleaned periodically as indicated in "Maintenance and Troubleshooting".

The Coherent warranty covers defects in material and workmanship relating to the output optical element, but this warranty does not cover damage to the external output optical surface which is the result of contamination of the surface or abrasion of the surface.

4.5 Air Cooling

The C-20 and C-30 Air-Cooled lasers incorporate heat sinks cooled by forced air (blown by fans). The four fans draw 1 A of current when supplied with the required 48 VDC electrical power. Running the fans at higher voltages will reduce the operating life and is strongly discouraged. The user must provide the correct voltage polarity to the fans in order for the airflow direction and resulting volume to be sufficient to cool the laser adequately.

4.5.1 Air Flow

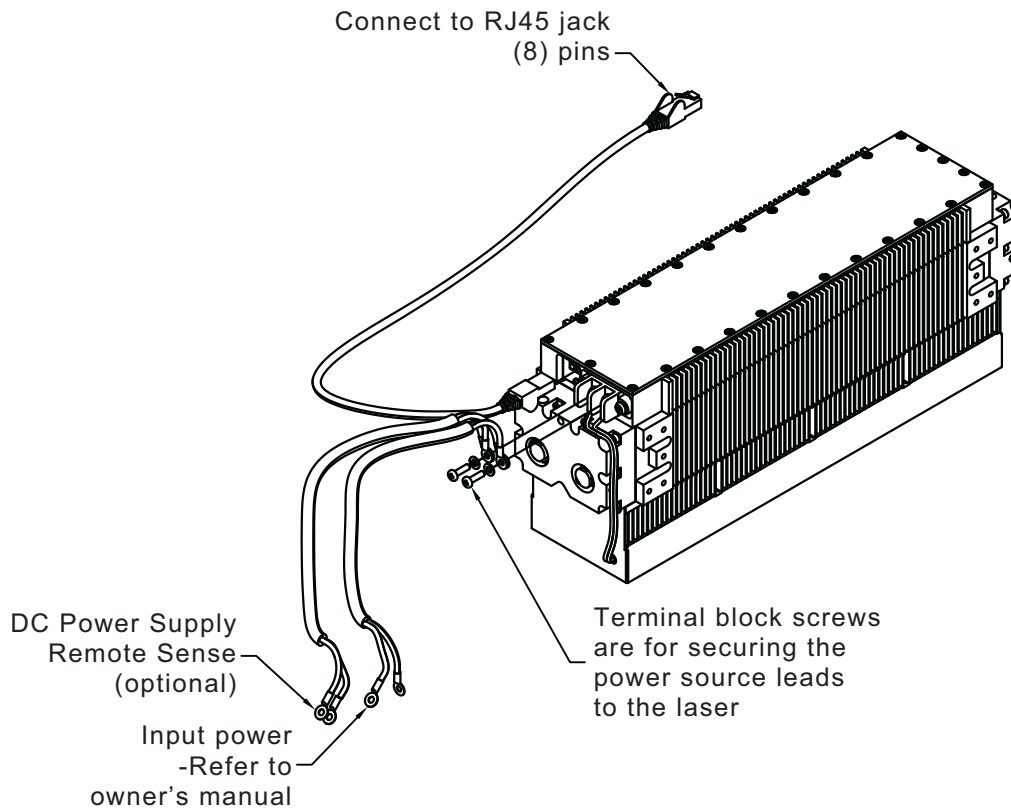
Open-air flow for the laser system is critical. Therefore, Coherent requires clear access to free air within 60 mm of the cooling fans and fins for the laser system. The air used to cool the C-20 and C-30 must be clean and free of contaminants. This requirement can be fulfilled by filtering the air at the input to the laser cavity or system equipment.

4.5.2 Signal Interface

Coherent uses a temperature interlock to ensure that the fans are operating and supplying sufficient air cooling. It is recommended that both Modulation and Control Enable be commanded to the OFF state when the airflow interlock system detects an over-temperature fault. The system also provides a temperature warning that should be used to alert the user to a need for maintenance of the cooling system to return the performance to the normal full cooling capacity. Failure to take action regarding the temperature warning will result in poorer product performance (outside specifications) and lesser product life time. These signals are listed in Table 4-1, "Signal Interface Description and Connector Pinout," on page 35 and further discussed in subsections of "Operation".

4.6 Electrical Power Connection

The C-20 and C-30 lasers require 48 VDC input DC power. This power is carried from the power source to the system through the terminal block on the C-20 and C-30. The maximum current required is 11.5 A, and 18 A peak for 1 ms minimum, measured at input terminals. See Figure 4-3 (p. 33).



Note: Pin #1 of RJ45 control interface is on the left as viewed.

Figure 4-3. Electrical Connections to C-20 and C-30



NOTICE!

To avoid damage to the head, connect leads to the user-supplied power source last after other connection are made.

The negative (return) side of the DC input connection to the C-20 and C-30 RF power module is connected internally to the chassis. The user must assure that the system into which the C-20 and C-30 is built protects against the possibility that the C-20 and C-30 chassis could be at a hazardous voltage and that personnel could be exposed to these voltages.



DANGER!

To avoid potentially fatal electrical shock hazards from electrical equipment, follow all applicable electrical codes such as (in the U.S.) the National Electrical Code.

Coherent strongly recommends that the user review the precautions described in “Laser Safety” (p. 9) regarding electrical safety before using the C-20 and C-30 lasers. It is the user’s responsibility to provide circuit breakers and/or fusing of the AC power source in accordance with all applicable laws and regulations.

4.6.1 DC Power Supply Requirements

The following are the requirements for the customer-supplied DC power supplies.

DC Voltage:	48 VDC measured at the terminals.
Peak Current:	18 A for a minimum of 1 ms with a maximum voltage drop of 1.5 V
Regulation:	$< \pm 2\%$
Regulation Sensing:	Remote at load
Ripple and Noise:	$< 1\%$ p-p (20 MHz BW limit)
Overload and Short Circuit Protect:	Automatic Recovery

4.6.1.1 DC Power Supply Cabling Requirements



Coherent recommends the use of remote voltage sense/regulation at the C-20 and C-30. This requires a 4-wire cable (2 supply currents and 2 voltage senses).

The following requirement minimizes the voltage loss from supply to the C-20 and C-30:

Wire length (in Meters)	AWG
0-2	18
2-3	16
3-5	14
5-8	12
8-12	10
12-20	8

4.7 Control Signal Connection

Electrical control of the C-20 and C-30 lasers is achieved via an RJ-45 connector built into the system. The signals carried on each of the pins are indicated in Table 4-1. Details about controlling the laser through the signal interface are discussed in “Operation” in the operator’s manual.

Table 4-1. Signal Interface Description and Connector Pinout

Pin No.	Signal Description
1	Modulation TTL logic input; 1=RF ON, 0=RF OFF; 1 k Ω impedance This input turns on the laser. See also Pin 7, Control Enable, below.
2	+ 15 VDC \pm 0.5 VDC, 0.25 Amps Max output for customer use.
3	LASER OK TTL logic output; 1=LASER OK, 0=LASER Fault; I_{OH} = -0.4 mA, I_{OL} = 8 mA Output is asserted when no faults (VSWR, Temp. or Volt.) are detected.
4	Temperature OK TTL logic output; 1=Temp OK, 0=Temp Fault; I_{OH} = -0.4 mA, I_{OL} = 8 mA Output is asserted when temperature is below the 60°C warning level. The temperature fault will occur at a case temperature of approximately 80°C
5	Voltage OK TTL logic output; 1=Voltage OK, 0=Voltage Fault; I_{OH} = -0.4 mA, I_{OL} = 8 mA Output is asserted when DC supply voltage (V_{DD}) is between 43 VDC < V_{DD} < 55VDC.
6	Internal Coherent use; must be grounded or not connected by OEM.
7	Control Enable TTL logic input; 1=Laser Control Enabled, 0=Laser Control Disabled This input must be asserted before Modulation can be used to turn on laser.
8	Customer Logic Ground for all interface signals.
Notes: 1) Connector used is RJ-45 type. 2) These specifications are subject to change.	



NOTICE!

Coherent highly recommends use of shielded interface cables. The interface cable shield must connect to the chassis ground of the controller. In addition to proper shielding, this shield provides a secondary connection for the signal ground (Pin 8).

A floating ground connection (use of un-shielded interface cable or no return path between the host control electronics and the laser) can present an unsafe condition and result in unstable or unexpected operation of the laser. This condition can arise when the control signal ground connection (Pin 8) is lost and the Control Enable (Pin 7) and Modulation (Pin 1) remain high. Therefore, Coherent strongly recommends that a second safety ground be provided either via a shielded control cable or common potential chassis mounting between the laser head and the control electronics. Inadequate or nonexistent grounding between the laser and the external control system can result in loss of control of the laser and damage to the laser electronics or the external control electronics.

4.8

Beam Propagation

The true waveguide structure of the C-20 and C-30 delivers a 1.8 mm $1/e^2$ diameter beam with a 7.5 mrad $1/e^2$ full angle divergence. The typical beam diameter as a function of distance from the laser is shown in Figure 4-4.

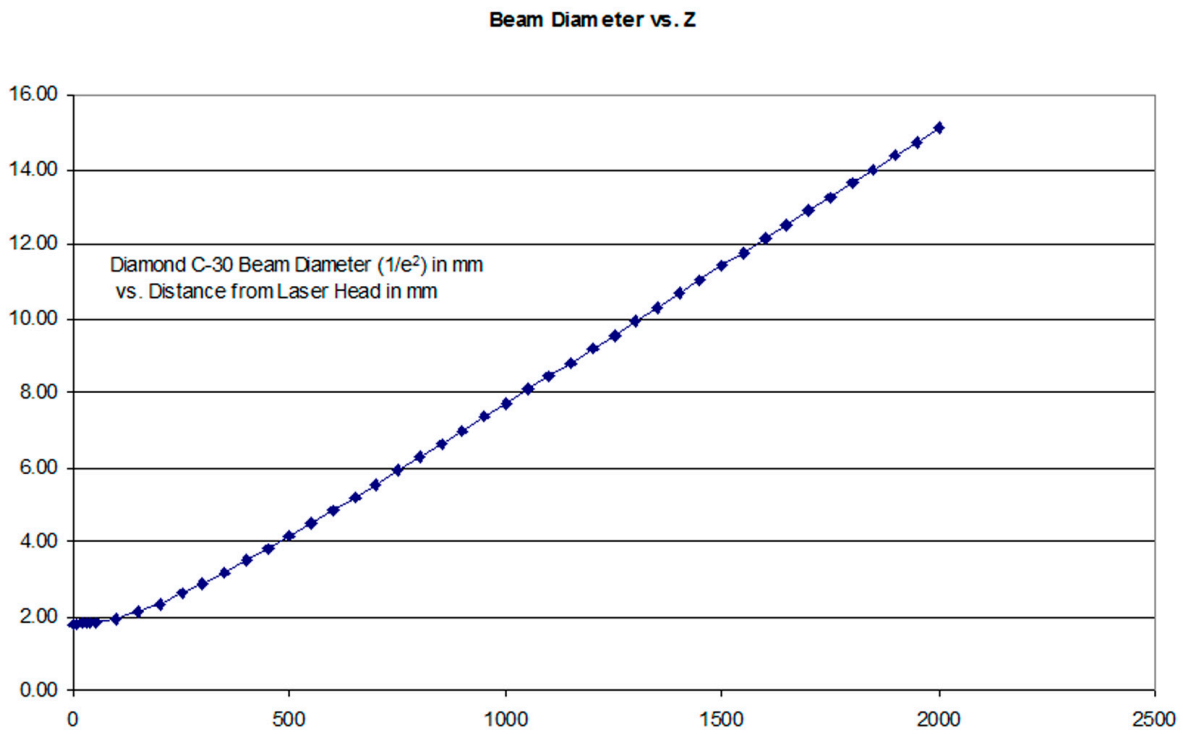


Figure 4-4. Beam Diameter vs. Distance from Laser Head



Diamond C-20 and C-30 Air-Cooled OEM Lasers Preinstallation Manual
©Coherent Corp. 8/2024 (RoHS), printed in the USA and Thailand
Part No. 1424908 Rev. AG



INNOVATIONS THAT RESONATE



Diamond C-20 and C-30 Air-Cooled OEM Lasers Preinstallation Manual
@ 2024 Coherent Corp. (RoHS) Printed in the USA and Thailand
Part No. 1424908 Rev. AG