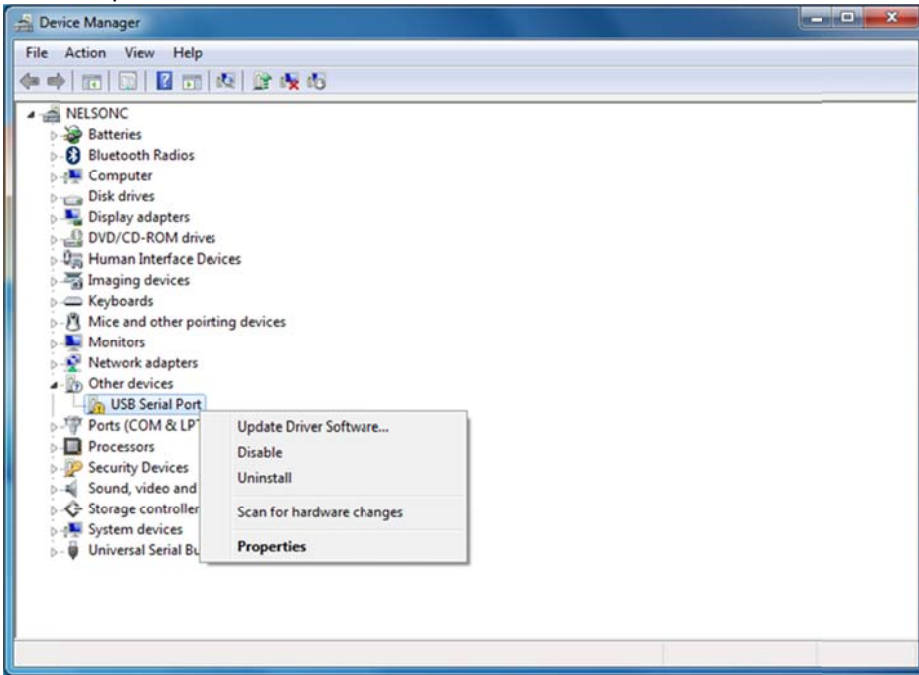


WaveMaster USB driver install instructions

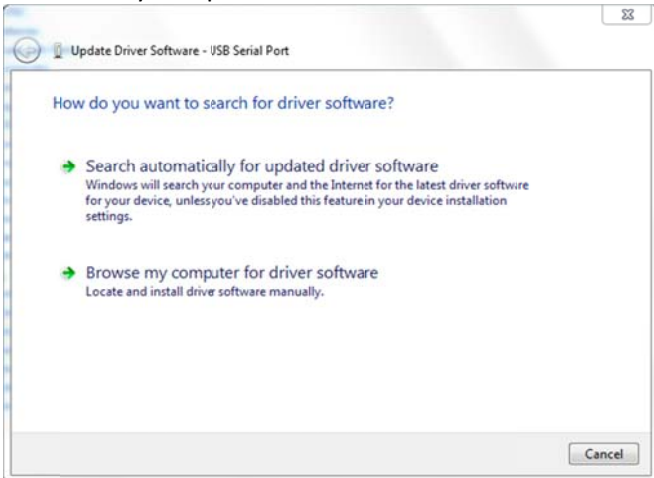
When the USB cable is connected between the WaveMaster and the computer, Windows should automatically bring up a New Hardware Wizard. If the New Hardware Wizard is able to search on Windows Update for the USB driver, it should automatically find and install the proper driver. If that completes correctly, the WaveMaster should show up in Device Manager as a “USB Serial Port” as shown in the last screen shot below. In that case, no additional steps are needed and communication can be established through the COM port that is automatically assigned to the connection.

If Windows Update cannot find the proper driver or if there is not an internet connection for Windows Update to search from, the driver can be manually installed through Device Manager on the computer. The steps below outline the manual driver installation.

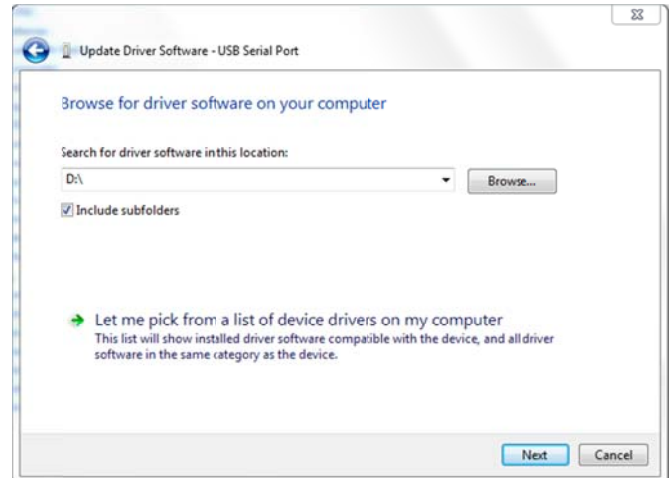
From Device Manager on the computer, right-click on the “USB Serial Port” device associated with the WaveMaster and select “Update Driver Software”.



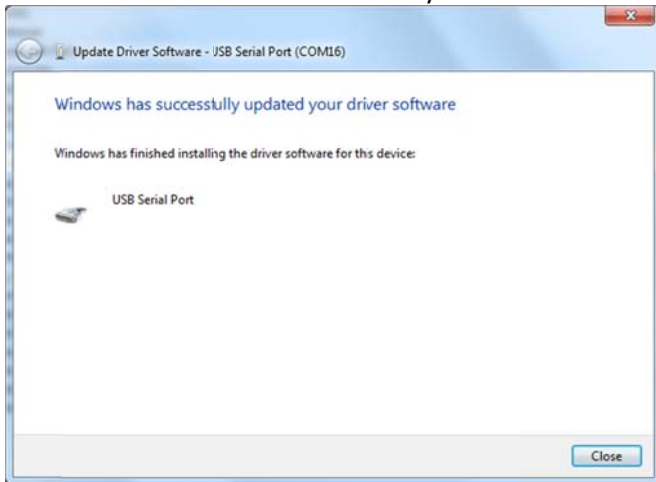
When prompted for how to search for the driver, select “Browse my computer for driver software”.



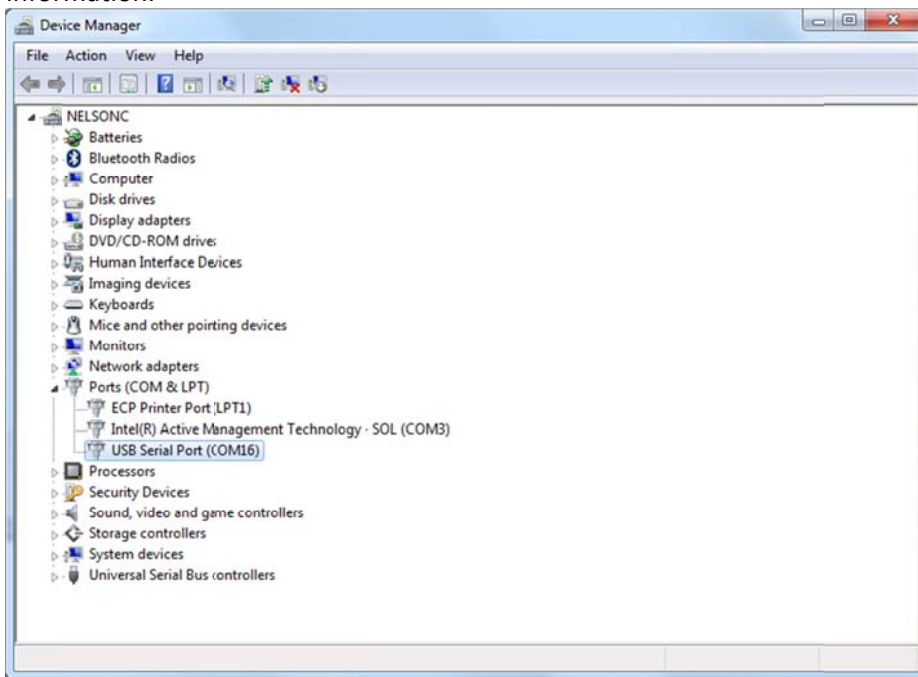
From this screen, browse to the CD-ROM drive (often the D:\ drive), or to whatever other location the driver files have been copied to. Be sure the checkbox is selected to “Include subfolders”. Then click “Next”.



The driver files should automatically be found and install at this point.



After a successful installation, the WaveMaster should show up in Device Manager as a “USB Serial Port” with a COM port number associated with it. At that point, the meter can be communicated with through the COM port that has been assigned to it. The meter is basically just showing up as another COM port on the computer now and communication can be handled similar to standard serial port communication. The text commands from the WaveMaster user manual can be used to change settings and query the meter for measurement data and setting information.



If the USB driver installation is not successful after some basic troubleshooting, another option would be to use the RS232 port on the WaveMaster, which uses the same commands and syntax as the USB serial port.