

FLAT TOP BEAM SHAPER

FOR VISIBLE / 1 μ m LASER WAVELENGTHS



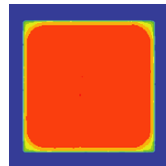
FEATURES

- Gaussian input beams with single mode M2 <1.1 for best results
- Customizable output beam shapes and sizes
- Customizable output energy distributions
- Assembled unit may consist of multiple lenses, depending on desired spot size
- Available in customized housing
- Lens materials: Fused Silica, Calcium Fluoride

APPLICATIONS

- Micro-materials processing
- Drilling
- Welding

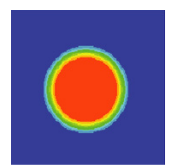
Examples of output designs



Square/Rectangular Shaped Flat Top



Ring Shaped Flat Top



Circular Shaped Flat Top