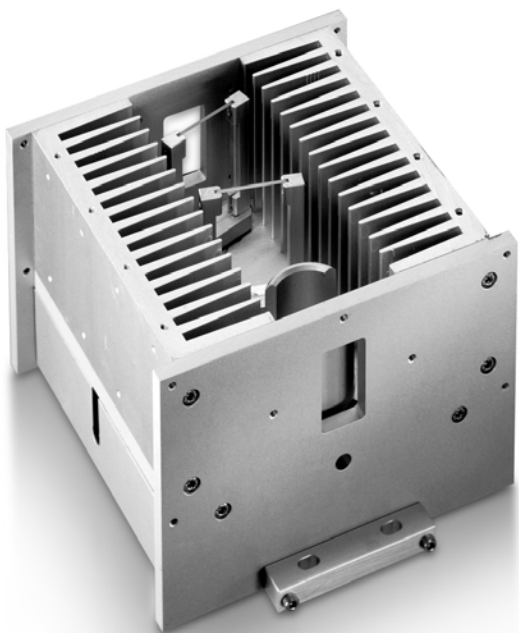




# Attenuator Module

## Superior Fluence Control

The optical attenuator module is placed in front of the laser beam exit and enables seamless fluence setting. Using an attenuator the transmitted energy level within a laser beam delivery system is accurately controlled while the excimer laser maintains its optimum working point.



### FEATURES & BENEFITS

- Precise energy control and beam walk compensation for stable fluence over an extended laser energy range
- Motorized attenuator version for integration into a closed loop attenuator control unit
- Various cooling options for use with high power excimer lasers

### APPLICATIONS

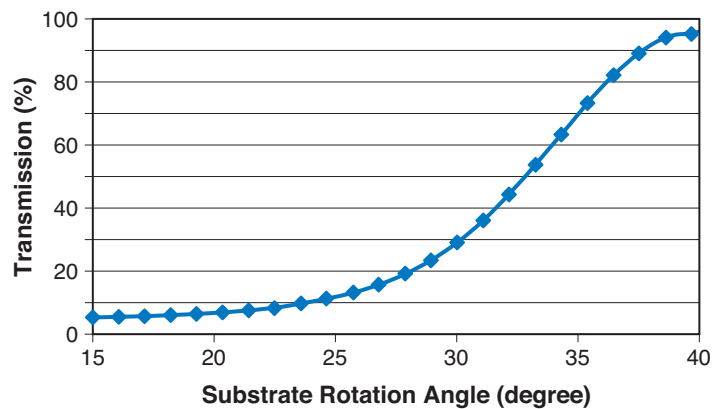
- Pulsed Laser Deposition (PLD)
- Laser Lift-Off (LLO)
- Laser-Induced Forward Transfer (LIFT)
- CFRP Pre-Treatment

SPECIFICATIONS	Manual Attenuator Module	Motorized Attenuator Module
Clear Aperture <sup>1</sup>	42 x 22 mm (1.65 x 0.87 in.)	
Beam Height	90 mm (3.54 in.)	
Transmission Range (%) 248/308/351 nm Wavelengths 157/193 nm Wavelengths	10 to 90 10 to 70	
Transmission Adjustment	Manual adjustment knob and digital scale	DC motor, interface module, and control software
Electromagnetic Shutter	Yes	
WEIGHT/DIMENSIONS		
Weight	5.5 kg (12.18 lbs.)	
Dimensions	208 x 180 x 135 mm (8.19 x 7.09 x 3.54 in.)	

<sup>1</sup> Supports all ExciStar and COMPEX laser models (Attenuators for high power laser models available on request).

## TYPICAL PERFORMANCE DATA

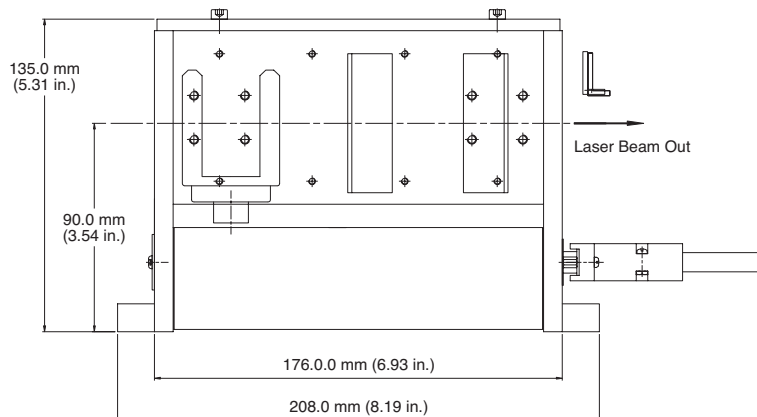
Typical Attenuator Transmission Curve



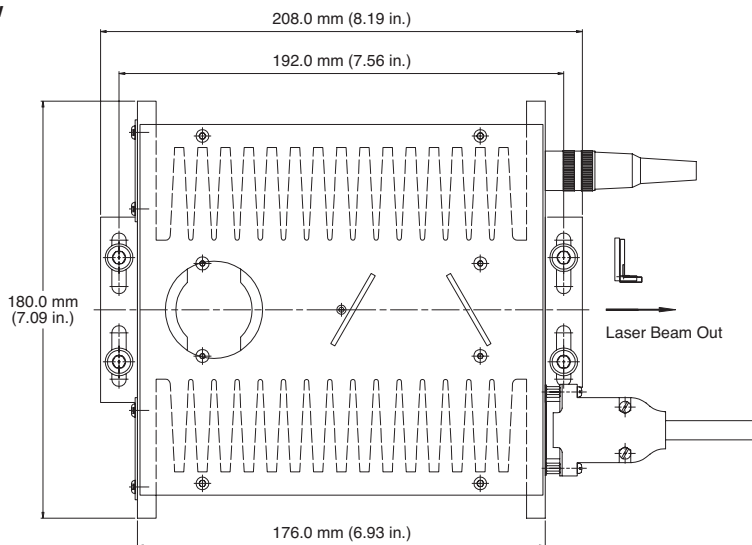
## MECHANICAL SPECIFICATIONS

### Attenuator Module (motorized version)

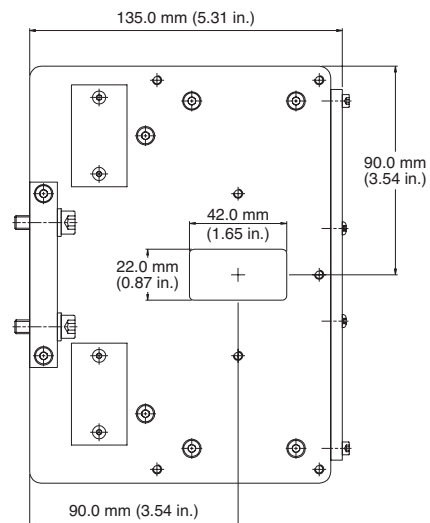
Side View



Top View



Front View



Coherent, Inc.,  
 5100 Patrick Henry Drive Santa Clara, CA 95054  
 p. (800) 527-3786 | (408) 764-4983  
 f. (408) 764-4646

[tech.sales@coherent.com](mailto:tech.sales@coherent.com) [www.coherent.com](http://www.coherent.com)

Coherent follows a policy of continuous product improvement. Specifications are subject to change without notice. Coherent's scientific and industrial lasers are certified to comply with the Federal Regulations (21 CFR Subchapter J) as administered by the Center for Devices and Radiological Health on all systems ordered for shipment after August 2, 1976.

Coherent offers a limited warranty for all Attenuator Modules. For full details of this warranty coverage, please refer to the Service section at [www.coherent.com](http://www.coherent.com) or contact your local Sales or Service Representative. MC-005-07-0M0320Rev.A Copyright ©2020 Coherent, Inc.